



PLIZMA
TECHNOLOGY

**Industrial Water & Wastewater
Treatment Solutions**

www.plizmatechnology.in





ABOUT US

PLIZMA TECHNOLOGY – RELIABLE PARTNER FOR INDUSTRIAL WATER & WASTEWATER TREATMENT

Plizma Technology delivers end-to-end water and wastewater treatment solutions, covering design, manufacturing, installation, and commissioning. We focus on practical, execution-driven engineering to handle real industrial challenges like fluctuating loads, compliance requirements, and long-term operational stability. Our solutions are built to meet CPCB/SPCB norms while ensuring consistent performance across industries. From ETP and STP to WTP and advanced treatment systems, we help industries achieve reliable treatment outcomes with systems that are designed to work on-site, not just on paper.



100+ MANPOWER



30+ ENGINEERS



1200+ PROJECT
EXECUTION

OUR VISION

To enable industries to operate with responsible water management by delivering reliable, high-performance treatment systems that protect the environment and ensure regulatory compliance. We aim to contribute to a cleaner and more sustainable future by making water and wastewater treatment practical, efficient, and scalable across industries.

OUR MISSION

To design, build, and deliver industrial water and wastewater treatment solutions that perform consistently under real operating conditions.

We focus on solving complex treatment challenges through strong engineering, on-site execution, and long-term system reliability, while expanding our reach across India and international markets.



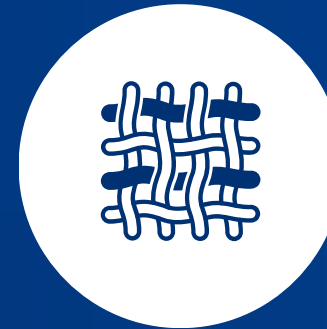
CORE STRENGTHS & CAPABILITIES

- ISO Certified Processes (9001:2015)
- Execution-Driven Engineering Approach
- Customized System Design for Each Industry
- CPCB / SPCB Compliance-Focused Solutions
- Reliable Performance Under Variable Loads
- End-to-End Project Handling (Design to Commissioning)
- Strong On-Site Installation & Commissioning Capability
- Energy-Efficient & Sustainable Treatment Systems
- Industrial-Grade Equipment & Build Quality
- After-Sales Support & Operational Assistance

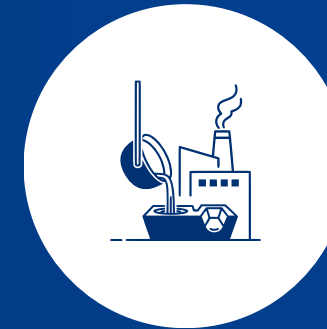
INDUSTRIES WE SERVE



PHARMACEUTICAL



TEXTILE



STEEL & METALLURGY



MINING & MINERAL
PROCESSING



HOSPITALS &
HEALTHCARE



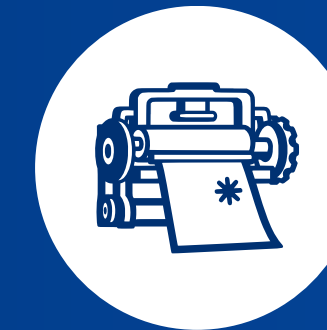
HOTELS & HOSPITALITY



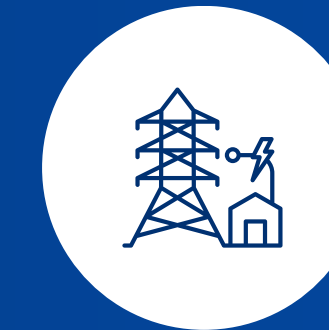
CHEMICAL



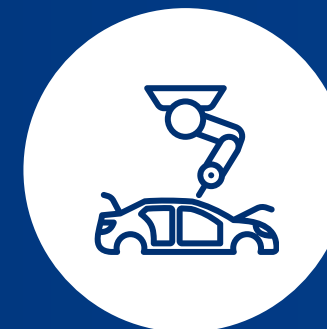
FOOD & BEVERAGE



PULP & PAPER



POWER & ENERGY



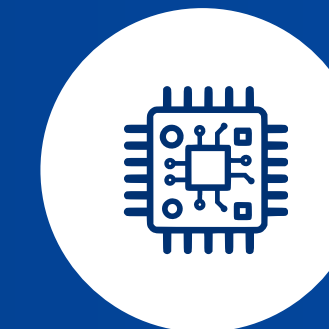
AUTOMOTIVE
MANUFACTURING



CEMENT
MANUFACTURING



FERTILIZER



ELECTRONICS &
SEMICONDUCTOR

& Many More...

GLOBALLY OUR MARKET

Plizma Technology has established a strong presence **across India**, delivering reliable water and wastewater treatment solutions nationwide, while steadily expanding its international footprint in countries such as **Nepal**, **Bhutan**, and **Bangladesh**, with ongoing efforts to reach new global markets and strengthen its position as a trusted partner in industrial water management.



CERTIFICATION



Certificate of Compliance
CE

We hereby declare that the technical file of product complied with the requirement of the Machinery Directive 2006/42/EC.
Certificate No.: 200325501

Manufacturer:
Name : **PLIZMA TECHNOLOGY**
Address : **2A, 64, PURTI PLANET, N.G SAHA ROAD, KOLKATA-700061, WEST BENGAL, INDIA**
Product : **WATER TREATMENT PLANT & ACCESSORIES**

The Certification body has performed an audit of the above product quality system covering the design, manufacture and final inspection of the certified products. The quality system has been assessed, approved and is subject to continuous surveillance according to the Machinery Directive 2006/42/EC.

This certificate is issued under the following conditions:

1. It applies only to the quality system maintained in the manufacture of above referenced models and it does not substitute the design or type examination procedures, if requested.
2. The certificate remains valid until the manufacturing conditions or the quality systems are not changed.
3. The certificate validity is conditioned by positive results or surveillance audits.
4. After fulfilling the relevant EU legislation of directive, the manufacturer shall affix to each device, of the referenced models.
5. The CE mark as shown above can be used, under the responsibility of the manufacturer, after completion of an EC Declaration of conformity and compliance with all relevant EC Directives. The statement is based on a single evaluation of one sample of above mentioned products. It does not imply an assessment of the whole production.

Date of Registration : 20 March 2025
1st Surveillance Due : 19 March 2026
2nd Surveillance Due : 19 March 2027
Recertification Due (subject to the company maintaining its system to the required standard) : 19 March 2028

Validity of this Certificate can be verified at www.ukcert.co.uk




UK Cert Limited (UK)
5 Jupiter House, Calvea Park, Aldermaston, Reading Berkshire RG7 8NN, UK
Website: www.ukcert.co.uk, Email: info@ukcert.co.uk
This certificate is the property of UK Cert Limited (UK) and shall be returned immediately on request.



सत्यमेव जयते

MSME

MICRO, SMALL & MEDIUM ENTERPRISES
सूक्ष्म, लघु एवं मध्यम उद्यम



MANAGEMENT SYSTEM CERTIFICATE 

www.royalapl.com

This is to certify that

PLIZMA TECHNOLOGY
2A, 64, PURTI PLANET, N.G SAHA ROAD, KOLKATA - 700061, WEST BENGAL, INDIA.

has been assessed by RAPL and found to comply with the requirements of

ISO 9001 : 2015
Quality Management Systems

For the following activities:
ASSEMBLER AND SUPPLIER OF WATER TREATMENT PLANT & ACCESSORIES.

Certificate Number: E20250320331
Date of certification: 19/03/2025
1st Surveillance on or before: 18/03/2026
1nd Surveillance on or before: 18/03/2027
Certification Valid Until: 18/03/2028





Accredited
QMS Certification CAB# 119012


Director (Certification)
Royal Assessments Pvt. Ltd.
623 A, Tower-B, IThum, Plot No. A-40, Sector - 62, Noida 201301, India.
www.royalapl.com, info@royalapl.com
Phone : +91 120 4251329
This Certificate can be verified at www.iafcertsearch.org

SUSTAINABLE SOLUTION

WATER TREATMENT

- 🔥 Clarifier / Lamella / Tube-Settlers
- 🔥 Water Filtration Plant
- 🔥 Water Softener Plant
- 🔥 Ultra Filtration Plant
- 🔥 Reverse Osmosis Plant
- 🔥 Desalination Plant (SWRO)
- 🔥 De-Mineralization Plant

WASTEWATER TREATMENT

- 🔥 Sewage Treatment Plant
- 🔥 Effluent Treatment Plant
- 🔥 Condensate Polishing Unit
- 🔥 Zero Liquid Discharge
- 🔥 Oil Water Separator
- 🔥 ASME / Surge / Pressure Vessel Tank
- 🔥 Process Equipment for WTP & WWTP

SERVICES

- 🔥 O & M, AMC
- 🔥 Spares & Revamping
- 🔥 Augmentation of WTP/STP
- 🔥 Municipal STP & WTP
- 🔥 Sewage Pumping Station



CLARIFLOCCULATOR



FILTRATION PLANT



SIDE STREAM FILTER



SOFTENER PLANT

OUR SOLUTIONS



UF PLANT



RO PLANT



SWRO PLANT



DM PLANT

OUR SOLUTIONS



**SEWAGE TREATMENT
PLANT**



**EFFLUENT
TREATMENT PLANT**



**CONDENSATE
POLISHING UNIT**



**OIL WATER
SEPARATOR**



**ZERO LIQUID
DISCHARGE**

OUR CLIENTELE



WHY CHOOSE PLIZMA TECHNOLOGY

- End-to-End Project Execution
- Customized ETP, STP, WTP & WWTP Solutions
- Compliance-Focused Design (CPCB / SPCB)
- Reliable Performance in Real Industrial Conditions
- Strong On-Site Installation & Commissioning
- Industrial-Grade Equipment & Build Quality
- After-Sales Support & Operational Guidance





Industrial Water & Wastewater Treatment Solutions
Design | Manufacturing | Installation | Commissioning

Plizma Technology is committed to delivering reliable, compliant, and performance-driven water and wastewater treatment solutions for industries.

Corporate Office :

833/1 Sarat Chaterjee Road, Howrah - 711104

Registered Office :

64, N G Saha Road , Kolkata - 700061

Execution & Project Locations :

Pan India & Selected International Projects

✉ plizmatechnology@gmail.com

☎ [+91 89106 93970](tel:+918910693970)

🌐 www.plizmatechnology.in



Follow the **PLIZMA TECHNOLOGY**
channel on WhatsApp

Follow Us On :



We look forward to supporting your next project

ISO 9001:2015 Certified Company