



WE TREAT YOUR WATER

End-to-End Water & Wastewater
Treatment Solutions





PLIZMA
TECHNOLOGY
WE TREAT YOUR WATER

TABLE OF CONTENTS

ABOUT US 01-02

OUR OFFERINGS 03

WATER TREATMENT PLANT 04-05

WASTEWATER TREATMENT PLANT 06-07

FAECAL SLUDGE TREATMENT PLANT 08

EFFLUENT TREATMENT PLANT (ETP) 09-11

ZLD FOR MAXIMUM WATER RECOVERY 12-13

WHY CHOOSE PLIZMA TECHNOLOGY 14

SUCCESS STORIES & INDUSTRY EXPERIENCE 15-16

CLIENTELE 16

ABOUT US

ABOUT PLIZMA TECHNOLOGY

Plizma Technology is a trusted water and wastewater treatment solution provider, operating in this sector since 2015. We design, manufacture, install, commission, and service reliable treatment systems for industries, institutions, commercial facilities, and infrastructure projects. Instead of offering one-size-fits-all solutions, we study actual water quality, wastewater characteristics, site conditions, treatment objectives, and compliance requirements before recommending a practical system.



INDUSTRIAL WATER SUPPORT

Industries need treatment plants that do more than just look good on paper. They need systems that can handle real wastewater variation, meet pollution control requirements, and continue performing after installation. Plizma Technology helps industries by offering complete support from site study and process design to manufacturing, installation, commissioning, and after-sales service. The company works with practical engineering methods so that industries can treat wastewater safely, reuse water where possible, reduce compliance risk, and avoid frequent plant breakdowns or performance failures.

OUR EXPERTISE INCLUDES, BUT IS NOT LIMITED TO, THE FOLLOWING AREAS:

1. **Effluent Treatment Plants (ETP)** for industrial wastewater treatment
2. **Sewage Treatment Plants (STP)** for commercial, residential, institutional, and industrial sewage
3. **Water Treatment Plants (WTP)** for raw water purification and process water use
4. **RO, DM, Softener, and Filtration Systems** for treated water and utility requirements
5. **Zero Liquid Discharge (ZLD) Solutions** for industries aiming to reduce wastewater discharge
6. **Plant Upgradation, AMC, and Troubleshooting** for existing ETP, STP, WTP, and wastewater systems

OUR VISION

To contribute to a future where water is managed responsibly, reused efficiently, and treated as a valuable resource. Plizma Technology envisions becoming a trusted leader in water and wastewater treatment by delivering innovative, sustainable, and technically sound solutions that support industries, institutions, and communities in meeting their environmental responsibilities. Through continuous improvement, engineering excellence, and customer-centric service, we aim to create long-term value while contributing to cleaner ecosystems, regulatory compliance, and sustainable growth.



OUR MISSION

To deliver reliable, site-specific, and compliance-focused water and wastewater treatment solutions that address real operational challenges. We are committed to designing, manufacturing, installing, and supporting efficient treatment systems including ETP, STP, WTP, RO, DM Plants, ZLD, and FSTP solutions. By combining practical engineering, dependable project execution, and responsive after-sales support, we help clients optimize water usage, improve treatment performance, achieve regulatory compliance, and manage water resources responsibly throughout the lifecycle of their operations.



YEARS OF EXPERIENCE



IN-HOUSE DESIGN, MANUFACTURING
& SERVICE SUPPORT



PAN-INDIA EXECUTION

OUR OFFERINGS

WATER TREATMENT PLANT

Plizma Technology provides Water Treatment Plant solutions for industries, commercial buildings, institutions, and process water use. We first study raw water quality, flow requirement, hardness, TDS, iron, turbidity, pH, and final water use. Based on this, we suggest the right system such as WTP, RO, DM Plant, Softener, filtration, UV, or dosing system. Our focus is to provide clean, usable, and reliable treated water with proper design, installation, commissioning, and service support.

What we cover:

- Raw water testing and treatment planning
- WTP, RO, DM Plant, Softener, and filtration systems
- Hardness, TDS, iron, turbidity, colour, and odour control
- Process water, utility water, and drinking water support
- Proper sizing based on flow and usage
- Installation, commissioning, AMC, and troubleshooting



WASTEWATER TREATMENT PLANT

Plizma Technology provides Wastewater Treatment Plant solutions for industries, commercial projects, municipal needs, and institutions. We study wastewater flow, COD, BOD, TSS, pH, oil and grease, sludge load, organic load, hydraulic load, sludge generation, and discharge/reuse requirements before designing the system. Our solutions include ETP, STP, FSTP, ZLD support, tertiary treatment, plant upgradation, AMC, and troubleshooting. We focus on practical treatment performance, CPCB/SPCB compliance support, and long-term plant reliability.



What we cover:

- ETP, STP, and FSTP design, manufacturing, and installation
- Industrial wastewater, sewage, and faecal sludge treatment
- COD, BOD, TSS, pH, oil and grease control
- CPCB/SPCB compliance-focused planning
- MBBR, SBR, MBR, ASP, and suitable treatment technologies
- Upgradation, AMC, troubleshooting, and performance improvement

WATER TREATMENT PLANT

IRON REMOVAL PLANT

If your water has a yellowish colour, metallic taste, bad odour, iron stains, or frequent filter choking, an Iron Removal Plant helps solve the issue at the source. The system removes excess iron from raw water and improves water clarity, taste, and usability. It also protects pipelines, RO systems, filters, and process equipment from staining, blockage, and long-term damage.

Helps solve:

- Yellow or reddish water colour
- Iron stains on floors, tanks, fittings, and pipelines
- Metallic taste or smell in water
- Frequent filter choking
- Poor water quality for process use
- Iron deposition and fouling in RO, pipelines, and process equipment



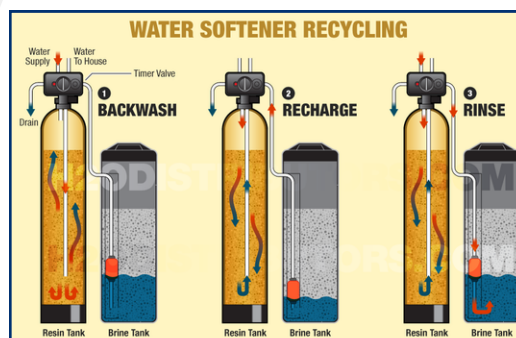
WATER SOFTENER

If hard water is creating scaling, white deposits, poor boiler performance, RO membrane fouling, or frequent maintenance problems, a Water Softener helps reduce hardness and protect your equipment. It improves water usability for boilers, cooling towers, process lines, washing, and utility applications. A properly selected softener also helps reduce breakdown risk and long-term operating issues.



Helps solve:

- Hard water scaling
- White deposits on pipelines and equipment
- Reduced boiler and cooling tower efficiency
- RO membrane fouling
- High maintenance due to hardness
- Poor water quality for industrial use



DEMINERALIZATION PLANT / DM PLANT

If your process needs low mineral, low conductivity, or high-purity water, a DeMineralization Plant helps remove dissolved salts and minerals from raw water. It is useful for boilers, pharmaceuticals, laboratories, process industries, electronics, plating, and other applications where normal treated water is not enough. A properly designed DM Plant helps protect equipment, improve product quality, and maintain stable process performance.

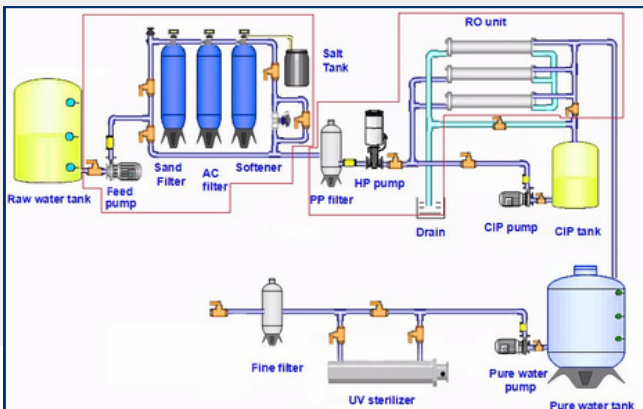
Helps solve:

- High conductivity in water
- Dissolved salts and mineral content
- Poor boiler feed water quality
- Scaling and deposits in process equipment
- Quality issues in sensitive industrial processes
- Need for high-purity water for production or utility use



REVERSE OSMOSIS PLANT

If your water has high TDS, salinity, hardness, bad taste, or dissolved impurities, an RO Plant helps make the water cleaner and more usable. It removes a major portion of dissolved salts and unwanted impurities, making the water suitable for process use, drinking support, boiler feed, cooling tower makeup, and industrial applications. A properly selected RO system also helps reduce scaling, product quality issues, and equipment damage caused by poor water quality. Proper pretreatment is essential to protect RO membranes from scaling, fouling, and premature failure.



Helps solve:

- High TDS and salinity
- Bad taste or poor water clarity
- Dissolved salts and impurities
- Scaling in pipelines and equipment
- Poor water quality for process use
- RO pretreatment and membrane fouling issues



WASTEWATER TREATMENT PLANT

SEWAGE TREATMENT PLANT (STP)

Engineered for Real-World Performance

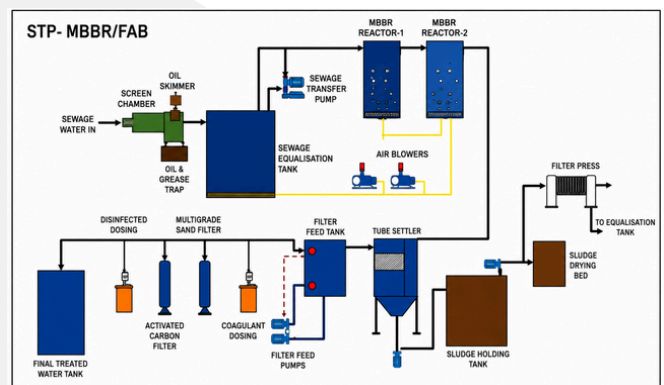
A Sewage Treatment Plant is needed where sewage is generated daily from apartments, hotels, hospitals, institutions, commercial buildings, industrial campuses, and townships. A properly designed STP helps treat sewage safely, reduce odour, control hygiene issues, and support discharge or reuse requirements.

Our STP solutions are planned according to actual sewage flow, inlet load, available space, outlet quality, and reuse need. The goal is to provide a system that is easy to operate, stable in performance, and suitable for long-term use.



Common Sewage Problems We Help Fix:

- Untreated sewage discharge
- Bad odour and hygiene issues
- High BOD, COD, TSS, and organic load
- Sewage overflow or poor treatment
- Compliance-related risk
- Wastage of reusable treated water
- Poor performance of old STP systems

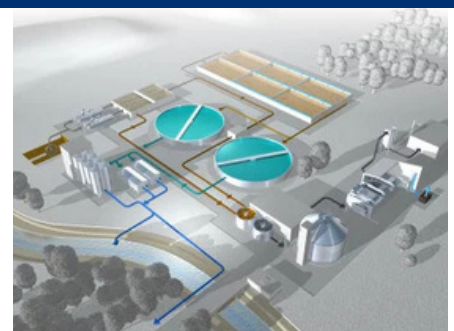


How Sewage Gets Treated

Sewage first passes through screening to remove large solids. Then biological treatment reduces organic load with the help of microorganisms. After this, the treated water goes through settling, filtration, and disinfection based on the required outlet quality.

Common STP technologies include:

- **MBBR** for compact and stable treatment
- **SBR** for controlled batch treatment
- **MBR** for high-quality treated water
- **ASP** for conventional sewage treatment
- **Tertiary Treatment** for better reuse quality



Engineered for Real-World Performance

Many STPs fail because they are selected only by capacity, without studying the real site situation. Sewage flow changes during the day, inlet quality may vary, operators may not be highly trained, and maintenance may not always be regular. That is why the plant should be designed for practical operation, not only for paper calculations.

Our approach covers process design, equipment selection, installation, commissioning, and after-sales support, so the system can perform consistently over time.

Our STP Scope

- New STP design and installation
- Packaged and compact STP systems
- MBBR, SBR, MBR, and ASP-based STP
- Tertiary treatment for reuse
- STP automation support
- Existing STP troubleshooting
- Capacity improvement and upgradation
- AMC and performance support

Engineered for Real-World Performance

- **Actual Load-Based Design**

System selection is based on real sewage flow and inlet condition.

- **Compliance-Focused Planning**

Treatment stages are planned for discharge or reuse needs.

- **Space-Conscious Layout**

Suitable designs are selected based on available site space.

- **Stable Biological Treatment**

Process design focuses on steady and reliable performance.

- **Easy Operation**

Maintenance access, sludge handling, and operator use are considered.

- **Support After Commissioning**

AMC, troubleshooting, and upgradation support are available when needed.



A good STP should do more than treat sewage. It should reduce compliance risk, improve site hygiene, support water reuse, and keep performing reliably for years.

FAECAL SLUDGE TREATMENT PLANT

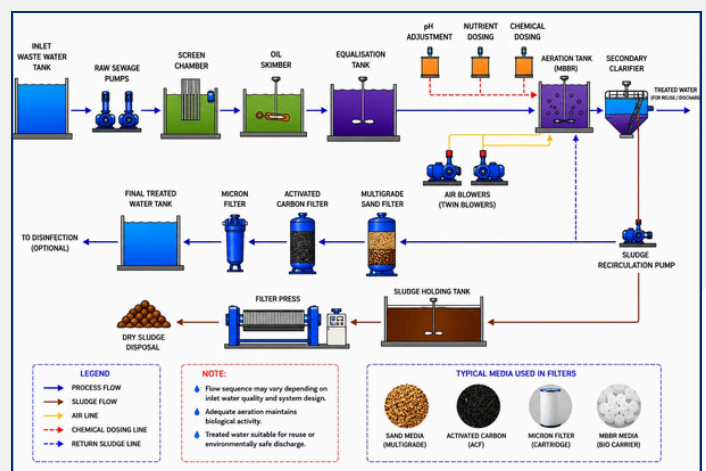
Designed to Treat Septic Tank Sludge Safely

A Faecal Sludge Treatment Plant is required where sludge from septic tanks, public toilets, community toilets, commercial facilities, institutions, and municipal collection systems needs safe treatment before disposal or reuse. Untreated faecal sludge can create serious odour, hygiene, groundwater, and environmental problems.

Our FSTP solutions are planned according to sludge quantity, collection pattern, inlet characteristics, site space, treatment requirement, and final disposal or reuse goal. The focus is to provide a practical system that helps manage sludge safely, reduce pollution risk, and support responsible sanitation management.

Common Problems FSTP Helps Fix

- Unsafe septic tank sludge disposal
- Bad odour and unhygienic handling
- Groundwater and soil contamination risk
- Open dumping or untreated discharge issues
- High organic and solids load
- Poor sanitation management in municipal areas
- Need for safe sludge drying, treatment, and disposal



How Faecal Sludge Gets Treated

Faecal sludge is first collected and received at the treatment facility. Large solids and grit are removed through screening and separation. The sludge then goes through thickening, stabilization, drying, and further treatment depending on the required output. Liquid separated from sludge is treated separately before discharge or reuse.

Common FSTP treatment stages include:

- Sludge receiving and screening
- Grit and solid separation
- Sludge thickening and stabilization
- Drying beds or mechanical dewatering
- Liquid stream treatment is designed separately based on BOD, COD, TSS, ammonia, and faecal coliform load
- Disinfection and safe disposal support

Our FSTP Scope

- FSTP planning and process design
- Equipment selection and plant setup
- Sludge handling and drying solutions
- Liquid treatment support
- Installation and commissioning With AMC, troubleshooting, and performance support

A good FSTP should make faecal sludge handling safer, cleaner, and more responsible. It helps reduce environmental risk, improve sanitation management, and support better public health outcomes.

EFFLUENT TREATMENT PLANT (ETP)

An Effluent Treatment Plant is required for industries that generate wastewater from production, washing, processing, cleaning, utilities, or chemical handling. Industrial effluent can contain high COD, BOD, TSS, oil and grease, colour, odour, pH variation, chemicals, heavy metals or trace contaminants, and other pollutants. If this wastewater is not treated properly, it can create compliance issues, plant shutdown risk, environmental damage, and operational difficulties / high operating costs.

Our ETP solutions are planned according to the actual effluent quality, industry process, daily flow, peak load, discharge requirement, reuse possibility, and site condition. The focus is to provide a practical treatment system that can handle real wastewater variation and support CPCB/SPCB compliance.

Common Effluent Problems We Help Fix

- High COD and BOD load
- High TSS and suspended solids
- pH variation and acidic/alkaline wastewater
- Oil, grease, and floating matter
- Colour and odour issues
- Chemical contamination from process discharge
- Sludge handling problems
- Existing ETP not meeting outlet norms
- Frequent breakdown or unstable performance
- Wastewater discharge compliance risk



Industries That Need ETP

- Textile and dyeing industries
- Pharma and chemical industries
- Food and beverage units
- Automobile and engineering units
- Printing and packaging industries
- Hospitals and laboratories
- Metal finishing and plating units
- Dairy and agro-based industries
- Industrial parks and manufacturing units



Why ETP Design Must Be Site-Specific

Industrial wastewater is not the same everywhere. Even two factories from the same sector can have different wastewater characteristics because of raw materials, chemicals, production process, cleaning cycle, and water usage pattern. That is why a standard plant design may not perform properly at every site.

A good ETP must be designed after understanding the actual wastewater behaviour. This helps select the right treatment stages, chemical dosing, biological process, filtration system, sludge system, automation level, and future upgradation possibility.

How Industrial Effluent Gets Treated

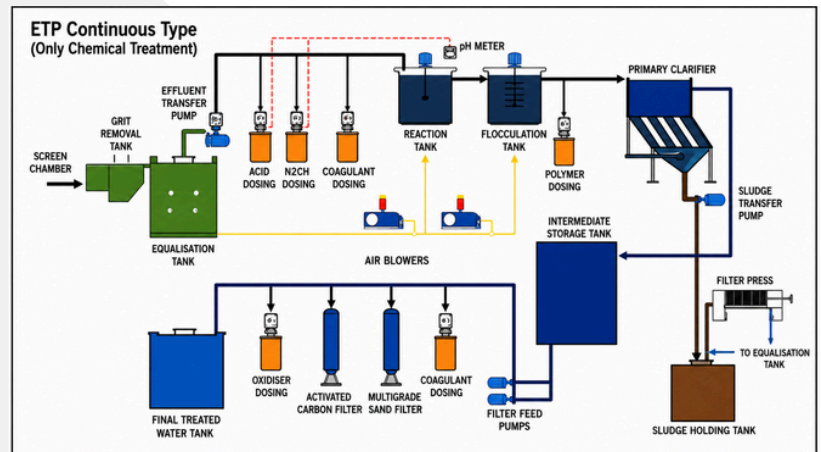
Practical Treatment Stages for Better Performance

ETP treatment usually starts with collection and equalization, where wastewater from different sources is collected and mixed to balance flow and load variation. After this, pH correction and chemical treatment are used to reduce pollutants, suspended solids, oil, colour, and other impurities. Depending on the effluent type, biological treatment may be added to reduce organic load such as BOD and COD.

After primary and biological treatment, the water may pass through clarification, filtration, activated carbon filtration, pressure sand filtration, micron filtration, disinfection, or tertiary treatment. For reuse or stricter discharge needs, advanced treatment such as RO, UF, MEE, or ZLD support may also be considered.

Common ETP Treatment Stages

- Collection tank and equalization tank
- Screening and oil removal
- pH correction and chemical dosing
- Coagulation and flocculation
- Primary settling or clarification
- Biological treatment where required
- Secondary clarification
- Pressure sand filter and activated carbon filter
- Tertiary treatment for reuse or polishing
- Sludge thickening, drying, and disposal support



Key Parameters Considered in ETP

- Daily wastewater quantity
- Peak flow and batch discharge pattern
- COD, BOD, TSS, TDS, pH, oil and grease
- Colour, odour, chemicals, and heavy metal traces
- Industry process and wastewater source
- Required outlet norms
- Reuse or discharge requirement
- Available space and civil condition
- Sludge generation and handling method
- Power, chemical, and maintenance requirement

ETP Technologies and Systems We Provide

- Physico-chemical ETP
- Biological ETP
- Compact and packaged ETP
- Industry-specific ETP systems
- Tertiary treatment systems
- ETP with filtration and polishing
- ETP upgradation and capacity improvement
- ETP automation and control support
- Existing plant troubleshooting
- AMC and performance support

Built for Compliance, Stability & Long-Term Use

More Than Installation, Complete ETP Support

Many ETPs fail because they are selected only by capacity or lowest price. In real site conditions, wastewater load changes, chemical dosing may become improper, sludge may increase, operators may not manage the plant correctly, or the inlet quality may not match the original design. These problems can lead to high outlet values, odour, overflow, repeated complaints, and compliance risk.

Our ETP approach focuses on practical design, correct process selection, proper execution, and support after commissioning. The goal is to help industries treat wastewater consistently and reduce the risk of operational failure.

WHY OUR ETP APPROACH WORKS

- **Actual Effluent-Based Design**

The plant is planned according to real wastewater quality, not only estimated capacity.

- **Compliance-Focused Planning**

Treatment stages are selected to support CPCB/SPCB discharge or reuse requirements.

- **Load Variation Handling**

Equalization and process control are considered to manage daily flow and load variations

- **Correct Chemical Treatment**

Dosing systems are planned based on pH, solids, oil, colour, and pollutant load.

- **Stable Biological Treatment**

Where biological treatment is needed, the process is designed for organic load reduction.

- **Better Sludge Management**

Sludge handling, drying, and disposal support are considered from the beginning.

- **Serviceable Plant Layout**

Maintenance access, operator handling, and equipment placement are planned practically.

- **Support After Commissioning**

AMC, troubleshooting, upgradation, and performance correction support are available.

Existing ETP Upgradation

Not every site needs a new ETP. Many industries already have an ETP but face poor outlet quality, high chemical consumption, odour, sludge issues, equipment failure, or non-compliance. In such cases, we can study the existing system and suggest practical correction.

We help with:

- ETP performance audit
- Process correction and rebalancing
- Aeration and biological treatment improvement
- Chemical dosing correction
- Filter media replacement
- Sludge handling improvement
- Capacity enhancement
- Automation and control upgrades
- Troubleshooting and AMC support

Final Note

A good ETP should protect the industry from compliance risk, reduce wastewater problems, and support smooth plant operation. With the right design, correct treatment stages, and dependable service support, industrial wastewater can be managed in a safer and more responsible way.

ZLD FOR MAXIMUM WATER RECOVERY

Designed to Reduce Wastewater Discharge

Zero Liquid Discharge is considered where industries need to reduce or eliminate liquid wastewater discharge and recover water for reuse. It is mostly used in sectors where wastewater contains high TDS, salts, chemicals, colour, organic load, or process contaminants that cannot be discharged directly without proper treatment.

A ZLD system is planned after studying wastewater quantity, TDS level, COD, BOD, hardness, silica, chloride, sulphate, pH, oil and grease, chemical load, and reuse requirement. The aim is to recover usable water and convert the remaining concentrated waste into manageable solids or sludge for safe disposal.

Common Problems ZLD Helps Solve

- High TDS wastewater discharge
- Repeated pollution control pressure
- Need for maximum water reuse
- Limited permission for liquid discharge
- High salt or chemical load in effluent
- Water scarcity at industrial sites
- Existing ETP not enough for final discharge
- Requirement for stricter environmental compliance



How ZLD Works

ZLD usually starts after primary ETP or wastewater treatment. The treated effluent is further processed through filtration, softening, RO, UF, evaporator, crystallizer, or other advanced treatment stages depending on the wastewater quality.

The system separates recoverable water from dissolved salts and concentrated waste. The recovered water can be reused in process, washing, cooling tower makeup, or utility applications. The remaining reject is handled through evaporation, drying, crystallization, or safe disposal methods.

Common ZLD Treatment Stages

- Pre-treatment and filtration
- Softening or chemical conditioning
- UF or advanced filtration where required
- RO system for water recovery
- RO reject handling
- MEE or evaporator system
- Crystallizer or drying system
- Sludge and solid waste handling
- Recovered water reuse planning



Built for High-TDS and Reuse Challenges

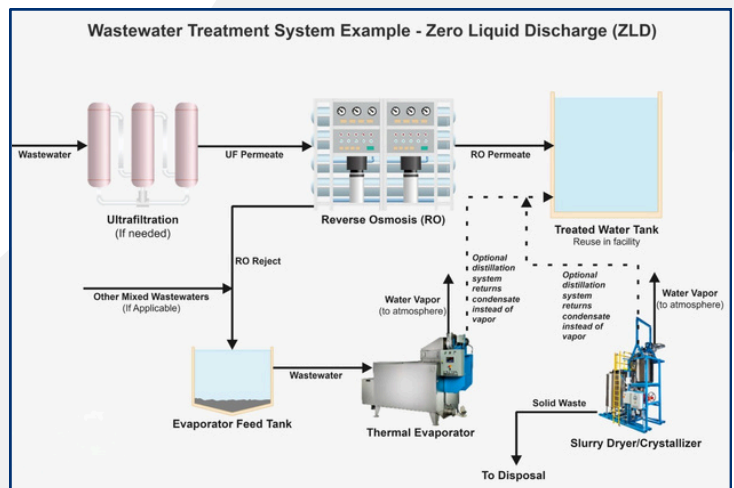
Practical ZLD Planning for Industries

ZLD is not a single machine. It is a complete treatment approach where each stage must match the wastewater quality and recovery target. If pre-treatment is poor, RO membranes may foul quickly. If salts and hardness are not controlled, scaling can damage the system. If evaporator load is wrongly calculated, operating cost can become very high.

That is why proper study, design, and stage selection are important before implementing ZLD. A good system should balance water recovery, energy use, chemical consumption, maintenance needs, and disposal responsibility.

Industries Where ZLD Is Used

- Textile and dyeing industries
- Pharma and chemical industries
- Food and beverage units
- Metal finishing and plating units
- Power plants and boiler utilities
- Tannery and leather processing units
- Automobile and engineering industries
- Industrial parks and common effluent projects



WHY THIS APPROACH WORKS

• Wastewater-Based Design

The system is planned according to actual effluent quality and recovery target.

• Better Pre-Treatment Protection

Proper pre-treatment helps reduce scaling, fouling, and membrane damage.

• Water Recovery Focus

Recovered water is planned for practical reuse inside the facility.

• Controlled Reject Handling

RO reject and concentrated waste are managed through suitable treatment stages.

• Operating Cost Awareness

Design decisions consider chemical use, power consumption, maintenance, and disposal cost.

• Support After Installation

Troubleshooting, upgradation, and service support are available for long-term performance.

Our ZLD Scope

- ZLD feasibility study and planning
- Pre-treatment system design
- RO and reject management support
- MEE, evaporator, and crystallizer integration
- Water recovery and reuse planning
- High-TDS wastewater treatment support
- Existing ZLD troubleshooting
- Plant upgradation and performance improvement
- AMC and technical service support

A good ZLD system helps industries reduce liquid discharge, recover water, and manage high-TDS wastewater under stricter compliance needs. Its feasibility depends on wastewater quantity, TDS, COD, hardness, silica, chloride, sulphate, target recovery, pre-treatment quality, and final salt/reject disposal route. It works best when designed using real wastewater data and practical operating conditions.

WHY CHOOSE PLIZMA TECHNOLOGY

Choosing a water or wastewater treatment company is not only about buying a plant. It is about getting a system that can handle real site conditions, meet treatment goals, reduce operational issues, and support long-term compliance. Since 2015, Plizma Technology has been helping industries and commercial facilities with practical water and wastewater treatment solutions designed around actual water quality, wastewater load, site condition, and performance requirements.

WHY BUYERS TRUST US

Actual Water Study

We study water quality, flow, load, and treatment requirements before suggesting a solution.



Compliance-Focused Design

Our systems are planned to support CPCB/SPCB norms and responsible wastewater management.



Site-Based Engineering

We consider space, inlet variation, maintenance access, power use, and operator handling.



Complete Project Execution

We handle design, manufacturing, installation, commissioning, and technical support



Reliable Plant Performance

Our focus is stable operation, practical treatment results, and reduced breakdown risk



Support After Installation

We assist with AMC, troubleshooting, upgradation, optimization, and performance improvement.



Existing Plant Improvement

We help improve underperforming ETP, STP, WTP, RO, DM, Softener, and filtration systems.



Clear Technical Guidance

We explain the right solution in simple terms so buyers can make confident decisions



OUR STRENGTH

Plizma Technology combines practical engineering, manufacturing capability, site execution, and service support to deliver treatment systems that work beyond the proposal stage. Whether the requirement is ETP, STP, WTP, RO, DM Plant, Softener, ZLD, filtration system, plant upgradation, or AMC, our goal remains simple:

WE TREAT YOUR WATER with practical planning, responsible execution, and dependable support.

SUCCESS STORIES & INDUSTRY EXPERIENCE

Mining & Mineral Processing Industry

Mining and mineral processing sites need strong water and wastewater treatment systems because site water may contain high suspended solids, silt, turbidity, heavy metal traces, acidity or alkalinity variation, and process-related contaminants. We have supported mining and mineral processing water/wastewater requirements where water may contain suspended solids, silt, turbidity, pH variation, and trace contaminants. Typical treatment needs include settling, clarification, filtration, pH correction, sludge handling, and reuse-focused water management. The design must consider mine water quality, stormwater variation, process discharge, high solids load, space condition, and reliable operation in tough site environments.

Healthcare & Institutional Industry

Healthcare and institutional sites need stable water and wastewater systems because daily operations cannot afford frequent failure. Requirements linked with **Sai Saburi** may involve STP systems for sewage treatment, RO or filtration for treated water use, odour control, hygiene management, and safe wastewater handling. In such sites, the design must consider occupancy load, peak sewage flow, disinfection, sludge handling, and easy operation.

Oil, Gas & Refinery Industry

Oil, gas, and refinery-related sites need wastewater treatment systems that can handle oil traces, suspended solids, chemical load, pH variation, and process contamination. Requirements associated with **Indian Oil** may involve oil and grease separation, equalization, chemical treatment, clarification, filtration, and compliance-focused discharge planning. These systems need careful process selection because refinery-type wastewater can vary strongly depending on activity and source.

Power & Utility Industry

Power and utility projects need treated water for boiler feed, cooling tower makeup, process use, and wastewater management. Requirements connected with **MTPCL** and **Garuda Power** may include RO, DM Plant, softener, filtration, and effluent treatment support. In this sector, key technical concerns include hardness, silica, TDS, conductivity, scaling, corrosion, blowdown handling, and maintaining stable water quality for equipment protection.

Railway & Infrastructure Sector

Railway and infrastructure facilities require practical water and wastewater treatment systems for stations, workshops, colonies, depots, and public-use areas. Requirements associated with **South Eastern Railway** may involve STP, WTP, filtration, and packaged treatment units. These projects need durable systems with simple operation, proper sludge handling, odour control, treated water reuse options, and dependable performance under continuous usage conditions.

Steel & Heavy Industry Sector

Steel and heavy industry sites usually need robust treatment systems because wastewater can contain suspended solids, oil and grease, scale particles, high turbidity, pH variation, and process-related contaminants. Requirements connected with JSW may involve ETP, WTP, RO, DM Plant, softener, filtration, and reuse-focused treatment. The design must consider high-flow handling, load variation, sludge generation, cooling water quality, and equipment protection.

Manufacturing & Process Industry

Manufacturing and process industries need water and wastewater systems designed around their actual raw water source, production process, wastewater quality, and discharge requirement. Requirements associated with AMPL may include ETP, STP, RO, DM Plant, softener, filtration, upgradation, and AMC support. The main focus is to control parameters such as pH, TSS, COD, BOD, TDS, hardness, oil and grease, and treated water consistency.

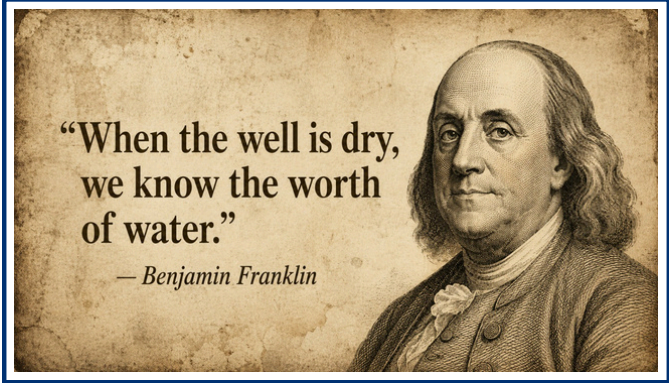
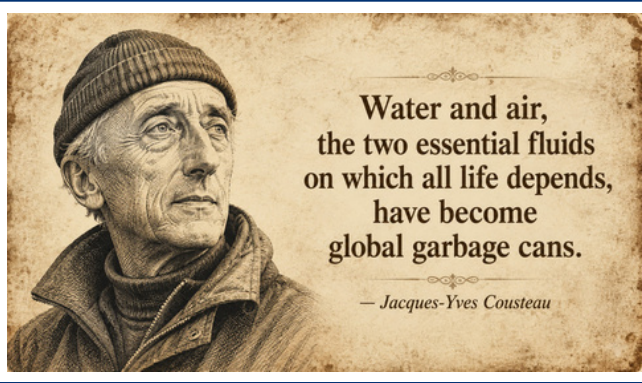
Many More Industries

Along with these sectors, we support many more industrial, commercial, institutional, infrastructure, and utility-based projects. Every treatment system should be selected based on real water or wastewater analysis, flow pattern, site condition, compliance requirement, maintenance access, and long-term operating cost. This practical approach helps deliver systems that are technically suitable, serviceable, and reliable in real operating conditions.

CLIENTELE



& Many More.....



#WeTreatYourWater

Corporate Office :

833/1 Sarat Chatterjee Road, Howrah - 711104

Registered Office :

64, N. G. Saha Road, Kolkata - 700061

Execution & Project Locations :

Pan India & Selected International Projects

plizmatechnology@gmail.com

| [+91 89106 93970](tel:+918910693970)

| www.plizmatechnology.in

Follow Us On :



Follow the **PLIZMA TECHNOLOGY** channel on WhatsApp

ISO 9001:2015 Certified Company